



WORLDWIDE SUPPLYING

MOBILE CRUSHING & SCREENING SOLUTIONS

**FOR AGGREGATES, MINING, AND
RECYCLING APPLICATIONS**



Boratas Corporation

Boratas Machinery has been founded in 2003. Since then we are specializing in the production of Stationary and Mobile Crushing, Screening, Washing, and Concrete Batching Plants. With quality-oriented equipment, innovative design, and superior materials Boratas Machinery is providing reliable solutions for mining, aggregate, and recycling applications.

Our Family

Boratas Machinery has a wide number of expert engineers, skilled technicians and educated staff with massive experience in this field. As Boratas Family we are passionate about our work and together we share the same goal which is our customers' success.

Our Services

In addition to designing and manufacturing crushing and screening machines, we supply our customers with spare parts. Moreover educating the customers' operators and certificating them for operating Boratas Machines is part of our post-sale services. Also, worldwide shipping and a one-year guarantee are dedicated to our customers.

Our Machines Features

We decided to go into innovations and started serial production of Mobile Crushing and Screening plants. Mobile Plants provide unbeatable performance, mobility, and efficiency across. Using PLC Control System, Wireless Remote Control, Hybrid Technology, Hydraulically Foldable Parts, as well as other features makes our customers get back to us again.

Our Worldwide Home

In the last decade, Boratas Machines opened its way to more than 60 countries across the globe. From freezing cold environments to extremely hot regions. This brings us an enormous amount of experience to make our machines suitable for every situation.



Performance & Efficiency

Ease of Use & Maintenance

Up to 40% Low Fuel Consumption compared to diesel-hydraulic models

Diesel-Electric Drive (Hybrid Technology)

Hydraulically Foldable Components

Mobility & Compactness



PRODUCTION FACTORY

FINAL ASSEMBLY



As Boratas Machinery we are a 100% Turkish founded company that is dealing with the production of crushing, screening, washing plants, and concrete batching plants since 2003. Our production is divided into two general stages where we do our best in order to provide the Best Quality and Reliable Machines which will bring profit to our customers. Our factories are located in Izmir, Turkey with two factories with a total of 12.000 m² closed area.

Our production is divided into two stages. Our pre-production stage of equipment starts in the first factory (Cutting, Welding, Bending, Paint Preparation). In this factory, we do all preparations for production where the process is totally controlled by our quality-control team members like welding X-ray checking, bended parts angle checking, plasma cutting, lathe, and CNC leveling works.

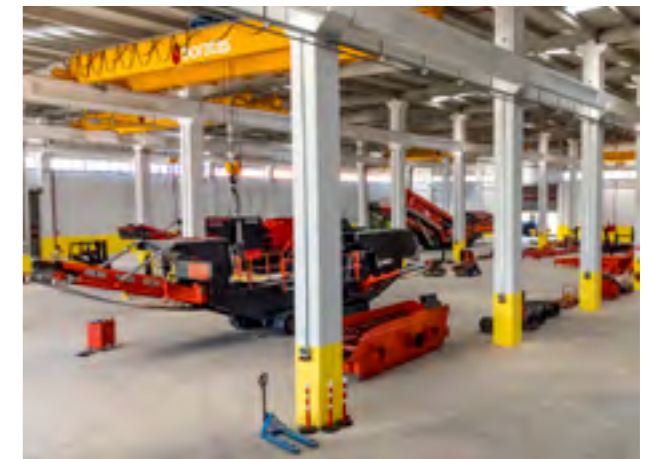
Moreover, Our R&D department is totally focused on applying innovative features for the whole equipment range and investing in future features by analyzing the market both in the present time and future. These researches affect our products range and develop them to the next levels in order to keep up-to-date along with our customers' developments.

After producing all components and parts, we send them to our Final Assembly Factory, where all components will assemble and mounted, and become a masterpiece as a mobile crushing and screening unit.



In the Final Assembly Factory we prepare components for Final Painting and proceed with Final Assembly. Parts are proceeding with final preparations in order to remove all rust with Sand Blasting and Washing with Chemicals. Afterwards, we apply paint operations in a paint cabinet with hot air drying system where parts after painting are going into paint cabinet in order to provide the best quality and long-lasting.

Final Assembly is done under the control of our high-level educated engineers, who control every step and assembly of each part and component. After the Final check-up, the machine is ready for the final destination.



WHY MOBILE ?

Nowadays mobility, flexibility, and compactness are concerns for many customers due to production site limitations. This caused an exponential increase in demand for mobile crushers.

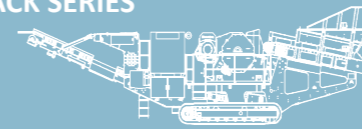
Mobile crushers and screens are track-mounted stone-crushing machines that they can be moved by the operator easily with wireless remote control. Because of using crawler tracks, they can move on any kind of surface without any problem. These mobile machines are used in different operations such as aggregates, recycling, and mining. Mobile crushers and screens are a good replacement for stationary systems.

One of the main concerns in the production sites is the hauling of crushing systems to different points and usually, it costs a significant amount of money because they would need a hauling machine or trucks to move and also it's so time-consuming due to installations.

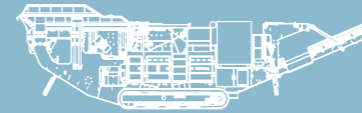
Mobile Crushers are the best solution for this matter. They are ready-to-use units and thanks to the mobility feature, they reduce the hauling costs and increase productivity. The basic components of mobile crushers are almost the same as for stationary systems, but completely mobile.



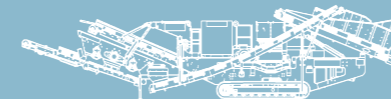
JAWTRACK SERIES



ROCKTRACK SERIES



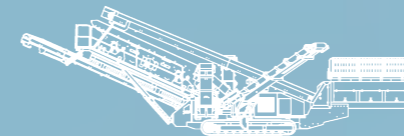
COTRACK SERIES



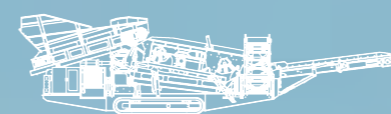
VSITRACK SERIES



CLASSTRACK SERIES



SCALTRACK SERIES



PRODUCT RANGE

MOBILE CRUSHERS 08-23

Mobile Crushing Machines are designed to crush mineral ores, recycle construction waste, and aggregate production. Aggregates are the main and most important part of construction since they have multiple usages such as asphalt, concrete, and road productions. This equipment is designed to reduce the large solid masses of raw materials into smaller sizes, to separate and change the form of waste material so they can easily be recycled or reused again.



MOBILE SCREENS 24-29

Mobile Screening Machines are designed to optimally screen materials at the lowest operation cost while still benefiting from mobility and compactness. These mobile screens are typically used in aggregate production, quarries, mining, and recycling and are perfect for users looking for mobility and compactness.



MOBILE PLANTS

Boratas Mobile Crushing and Screening Machines can be combined together in order to work in both tandem and triple as a full crushing and screening plant; But Mobile!

* Copyright © 2022 Boratas Machinery

** All design parameters and dimensions in this document can be changed by Boratas according to real working conditions and raw material characteristics.

MOBILE CRUSHERS

Mobile Crushers are designed to crush mineral ores and recycle construction waste and aggregate production. Aggregates are the main and most important part of construction since they have multiple usages such as asphalt, concrete, and road productions.

This equipment is designed to reduce the large solid masses of raw materials into smaller sizes, to separate and change the form of waste material so they can easily be recycled or reused again.

Boratas Machinery's mobile crushers are characterized by their high mobility, superior quality, and extreme compactness. Their high mobility provides easy movement between sites. Moreover, they do not require any heavy investment in concrete works and personnel.

With mobile crushing units, you can maximize productivity and reduce operating costs while increasing safety and reducing environmental impact which is very important nowadays.



JAWTRACK - MOBILE JAW CRUSHERS

BPJ 106 | BPJ 120 10-11

ROCKTRACK - MOBILE IMPACT CRUSHERS

BPK 100 | BPK 125 | BPK 101 | BPK 126 12-15

COTRACK - MOBILE CONE CRUSHERS

BPC 100 | BPC 200 | BPC 101 | BPC 201 16-19

VSITRACK - MOBILE VSI CRUSHERS

BPV 800 | BPV 950 | BPV 800CS | BPV 950CS 20-23

There are also other benefits in addition to the mobility advantages. For example, Boratas Mobile Crushers are using Diesel-Electric Hybrid Technology, which provides significant efficiency in energy consumption, and as a result, they are better for the environment by decreasing carbon footprint.

There are lots of advantages to using a Diesel-Electric drive over hydraulic drives. Firstly, the fuel consumption is significantly less, which is really an effective impact on the overall costs (20-40% less than hydraulic models). Secondly, Diesel-Electric machines require significantly less hydraulic oil, which reduces the costs of oil changes.

The other positive impact is the operating temperature limit for crushers. The Diesel-Electric drive system provides the operator the opportunity to continue operation in freezing cold conditions which, is a great opportunity for cold regions.

We believe that hybrid costs significantly less for our customers in the long-term, and they will be satisfied by the overall performance and efficiency of these machines. Also, we do care about ecological concerns and we try our best to protect our planet along with satisfying our customers, Diesel-Electric drive is the best solution for this.

JAWTRACK SERIES



Jawtrack jaw crusher is the perfect combination of compactness, mobility, and high performance featuring an imposing and high crushing capacity jaw crusher.

The Jawtrack series are used in a variety of applications such as mining, aggregates, and recycling. These mobile machines are ideal for work in urban regions with limited surface area. Thanks to its dust reduction system, users will not face issues using mobile crushers in cities.



Using a single toggle jaw, Jawtrack jaw crushers are high-efficiency mobile crushers able to crush all types of natural stones from the hardest granites to more abrasive varieties.

Ideal for

- Recycling applications such as asphalt and concrete
- Granite and natural stones with medium-hard level of hardness and high abrasivity
- Multistage crushing and screening applications
- Users in urban regions who are interested in compactness

High Capacity Crushing

The mobile jaw crusher is equipped with reliable and greatly efficient jaw crushers from the BCK series. These crushers are able to crush all types of natural stones at high output even at tight opening settings.

Easy to Maintain

The PLC screen in the control cabin notifies the user of occurring breakdowns and their place. There are no issues related to hydraulic systems since the machine operates on electricity and diesel. Maintenance and part replacements are very simple and easily done.

BPJ 106



Approx. Feed. Capacity	100 - 250 t/h
Opening Size	1,000 x 600 mm
Weight	44,000 kg
Transport Dimensions (mm)	14,900 x 3,150 x 3,550
Operation Dimensions (mm)	15,100 x 5,900 x 4,350

Standard Features

- High Capacity Jaw Crusher
- Operates with Electricity or Diesel
- Hydraulically Foldable Belts
- Wireless Remote Control
- PLC Control System
- Electric Drum Motors for Conveyors
- Vibrating Feeder with Grizzly Screen

Optional Features

- Metal Separator Magnet
- Hardox Armoured Bunker
- Automatic Lubrication System
- Dust-Reduction System
- Main Conveyor Cover

BPJ 120



Approx. Feed. Capacity	150 - 400 t/h
Opening Size	1,200 x 700 mm
Weight	60,000 kg
Transport Dimensions (mm)	16,000 x 3,350 x 3,600
Operation Dimensions (mm)	16,100 x 3,350 x 4,300

Standard Features

- High Capacity Jaw Crusher
- Operates with Electricity or Diesel
- Hydraulically Foldable Belts
- Wireless Remote Control
- PLC Control System
- Electric Drum Motors for Conveyors
- Vibrating Feeder with Grizzly Screen

Optional Features

- Metal Separator Magnet
- Hardox Armoured Bunker
- Automatic Lubrication System
- Dust-Reduction System
- Main Conveyor Cover

ROCKTRACK SERIES



Rocktrack impact crushers are highly efficient mobile crushers with excellent reduction ratios and cubical shaping abilities. These mobile units are usually used for aggregate production purposes, quarrying, and recycling.

These crushers are used for crushing materials with low to medium hardness levels such as limestone and reprocessing residual construction materials. Being easy to use, Rocktrack produces high-quality final products with a cubic shape which later can be directly used in concrete or asphalt production.



Features highly efficient impact crusher from the PDK series which stands out thanks to its high reduction ratio and durability. Moreover, this crusher has outstanding shaping abilities.

Ideal for

- Recycling applications such as asphalt and concrete
- Limestone and natural stones with medium hardness
- Multistage crushing and screening applications
- Users in urban regions who are interested in compactness

Fuel Efficiency and Hybrid Power

Not only does electric power reduce the carbon footprint, but it can also save contractors up to 40% on fuel costs when compared to diesel-hydraulic drive systems.

Maintenance and Ease of Use

Rocktrack startup is as easy as literally pressing one button. Driving the unit is done with user-friendly remote control. The main components of the machine are shown on the PLC screen. In case of a breakdown, the screen will point out the break location for inspection. Parts subject to wear are easily accessible and can be replaced in a short time.

BPK 100



Approx. Feed. Capacity	100 - 250 t/h
Opening Size	1,050 x 820 mm
Weight	42,000 kg
Transport Dimensions (mm)	14,800 x 3,150 x 3,550
Operation Dimensions (mm)	14,900 x 5,900 x 4,150

Standard Features

- Highly efficient Impact Crusher from PDK series with high capacity
- By-pass chute with side hydraulically foldable conveyor
- Bunker with hydraulically foldable side and rear walls
- Wireless Remote Control
- PLC Control System
- Operates on Electricity or Diesel
- Electric Drum Motors for Conveyors
- Vibrating Feeder with Grizzly Screen

Optional Features

- Metal Separator Magnet
- Hardox Armoured Bunker
- Automatic Lubrication System
- Rotor Type
- Dust-Reduction System
- Main Conveyor Cover

BPK 125



Approx. Feed. Capacity	150 - 350 t/h
Opening Size	1,280 x 880 mm
Weight	55,000 kg
Transport Dimensions (mm)	16,000 x 3,350 x 3,600
Operation Dimensions (mm)	16,100 x 6,150 x 4,250

Standard Features

- Highly efficient Impact Crusher from PDK series with high capacity
- By-pass chute with side hydraulically foldable conveyor
- Bunker with hydraulically foldable side and rear walls
- Wireless Remote Control
- PLC Control System
- Operates on Electricity or Diesel
- Electric Drum Motors for Conveyors
- Vibrating Feeder with Grizzly Screen

Optional Features

- Metal Separator Magnet
- Hardox Armoured Bunker
- Automatic Lubrication System
- Rotor Type
- Dust-Reduction System
- Main Conveyor Cover

ROCKTRACK SERIES + PostScreen



Mobile impact crushers BPK101 and BPK126 of the Rocktrack series are highly efficient mobile crushers with excellent reduction ratios and cubical shaping abilities. They feature a single-deck screen connected to the main tail conveyor for an extremely accurate end product.



The crushed material goes through a Post Screen with desired mesh size to screen the output for precise material. And the material bigger than the mesh size goes back to the bunker by return belt conveyor to get crushed again.

Ideal for

- Recycling applications such as asphalt and concrete
- Limestone and natural stones with medium hardness
- Multistage crushing and screening applications
- Users in urban regions who are interested in compactness

High Quality End Product

Outstanding shaping abilities and adding a single-deck screen enables the mobile impact crushers to produce one type of product with a precise and accurate dimension.

Maintenance and Ease of Use

These crushers include all the features of other Boratas mobile impact crushers, only with an added post screen. Thus, these crushers also are benefiting from Hybrid Drive, PLC System, and Wireless Control providing significant Ease of use and maintenance.

BPK 101



Approx. Feed. Capacity	100 - 250 t/h
Opening Size	1,050 x 820 mm
Weight	46,000 kg
Transport Dimensions (mm)	16,700 x 3,430 x 3,680
Operation Dimensions (mm)	17,900 x 6,150 x 4,700

Standard Features

- Single Deck Screen
- Highly efficient Impact Crusher from PDK series with high capacity
- By-pass chute with side hydraulically foldable conveyor
- Bunker with hydraulically foldable side and rear walls
- Wireless Remote Control
- PLC Control System
- Operates on Electricity or Diesel
- Electric Drum Motors for Conveyors
- Vibrating Feeder with Grizzly Screen

Optional Features

- Metal Separator Magnet
- Hardox Armoured Bunker
- Automatic Lubrication System
- Rotor Type
- Dust-Reduction System
- Main Conveyor Cover

BPK 126



Approx. Feed. Capacity	150 - 350 t/h
Opening Size	1,280 x 880 mm
Weight	62,000 kg
Transport Dimensions (mm)	17,700 x 3,650 x 3,700
Operation Dimensions (mm)	19,300 x 6,450 x 4,700

Standard Features

- Single Deck Screen
- Highly efficient Impact Crusher from PDK series with high capacity
- By-pass chute with side hydraulically foldable conveyor
- Bunker with hydraulically foldable side and rear walls
- Wireless Remote Control
- PLC Control System
- Operates on Electricity or Diesel
- Electric Drum Motors for Conveyors
- Vibrating Feeder with Grizzly Screen

Optional Features

- Metal Separator Magnet
- Hardox Armoured Bunker
- Automatic Lubrication System
- Rotor Type
- Dust-Reduction System
- Main Conveyor Cover

COTRACK SERIES



Cotrack cone crushers are characterized by optimal crushing capacity and superior cubical-shaped end product. These mobile crushers are usually used in secondary and tertiary crushing in multistage crushing applications.

Moreover, they are used in aggregate production, quarrying, mining, and recycling applications. Their outstanding overall performance is due to the perfect interaction of all their internal components.



Featuring Sandvik cone crushers as their main crusher, Cotrack crushers are designed to offer efficient and versatile solutions producing a high-quality end product.

Ideal for

- Granite and natural stones with medium-hard level of hardness and high abrasivity
- Secondary crushing in multi-stage crushing and screening applications
- Users in urban regions who are interested in compactness
- Secondary or tertiary crushing
- Road construction

Fuel Efficiency and Hybrid Power

Being hybrid, these crushers are electrical-diesel-driven machines. Accordingly, they do not require any heavy maintenance related to hydraulic systems such as pipe replacements or oil leakages, which reduces maintenance costs and increases productivity dramatically.

Cost Effectiveness

Considering the low fuel consumption, the low need for maintenance, and high productivity, these crushers operate at the lowest overall cost possible. The optimal cost-effectiveness in conjunction with high uninterrupted uptime makes these mobile crushers very profitable.

BPC 100



Model	CH430 Sandvik
Max Feed Size	42 - 214 mm
Weight	38,000 kg
Transport Dimensions (mm)	16,200 x 3,200 x 3,600
Operation Dimensions (mm)	15,150 x 3,200 x 4,300

Standard Features

- Highly efficient Sandvik CH430 Cone Crusher
- Hydraulically Adjustable Bunker Feeder
- Wireless Remote Control
- PLC Control System
- Operates on Electricity or Diesel
- Electric Drum Motors for Conveyors
- Belt Feeder

Optional Features

- Hardox Armoured Bunker
- Automatic Lubrication System
- Dust-Reduction System
- Main Conveyor Cover
- Variable Concave Selection

BPC 200



Model	CH440 Sandvik
Max Feed Size	47 - 250 mm
Weight	50,000 kg
Transport Dimensions (mm)	16,450 x 3,350 x 3,650
Operation Dimensions (mm)	15,900 x 4,450 x 4,500

Standard Features

- Highly efficient Sandvik CH440 Cone Crusher
- Hydraulically Adjustable Bunker Feeder
- Wireless Remote Control
- PLC Control System
- Operates on Electricity or Diesel
- Electric Drum Motors for Conveyors
- Belt Feeder

Optional Features

- Hardox Armoured Bunker
- Automatic Lubrication System
- Dust-Reduction System
- Main Conveyor Cover
- Variable Concave Selection

COTRACK SERIES + PostScreen



Mobile cone crushers of the Cotrack series BPC101 and BPC201 are exceptional mobile crushers able to provide large reductions ratios and an excellent cubical shape at high output capacity. These mobile crushers are used in a variety of applications such as aggregate crushing, mining, and recycling. Moreover, thanks to compactness, mobility, and dust reduction system, these crushers are ideal for contractors or aggregate producers working in urban regions.



Moreover, by adding a single-deck post screen the end product reaches the maximum preciseness. The material in a closed circuit system is continuously returned to the crusher until it's of a size that will pass through the product screen. This provides a clean and highly accurate end product.

Ideal for

- Granite and natural stones with medium-hard level of hardness and high abrasivity
- Secondary and Tertiary crushing in multi-stage crushing and screening applications
- Users in urban areas
- Users interested in a single and precise end product

High Capacity Crushing, Shaping, and Screening

Cotrack BPC101 & BPC201 Mobile Cone Crushers provide high-capacity crushing even at tight settings. The main Sandvik crusher delivers outstanding performance in both crushing and shaping in conjunction with the single-deck screen, which adds precision to an already superior high-quality cubical-shaped end product.

Maintenance and Ease of Use

These closed circuit cone crushers also benefit from Hybrid Drive, PLC System, and Wireless Control same as other models which provides significant Ease of use and maintenance.

BPC 101



Model	CH430 Sandvik
Max Feed Size	42 - 214 mm
Weight	44,000 kg
Transport Dimensions (mm)	18,250 x 3,400 x 3,650
Operation Dimensions (mm)	19,000 x 3,850 x 4,350

Standard Features

- Single Deck Screen
- Highly efficient Sandvik CH430 Cone Crusher
- Hydraulically Adjustable Bunker Feeder
- Wireless Remote Control
- PLC Control System
- Operates on Electricity or Diesel
- Electric Drum Motors for Conveyors
- Belt Feeder

Optional Features

- Hardox Armoured Bunker
- Metal Separator Magnet
- Automatic Lubrication System
- Dust-Reduction System
- Main Conveyor Cover
- Variable Concave Selection
- Double Deck Post Screen

BPC 201



Model	CH440 Sandvik
Max Feed Size	47 - 250 mm
Weight	58,000 kg
Transport Dimensions (mm)	19,000 x 3,650 x 3,700
Operation Dimensions (mm)	19,000 x 4,750 x 4,700

Standard Features

- Single Deck Screen
- Highly efficient Sandvik CH440 Cone Crusher
- Hydraulically Adjustable Bunker Feeder
- Wireless Remote Control
- PLC Control System
- Operates on Electricity or Diesel
- Electric Drum Motors for Conveyors
- Belt Feeder

Optional Features

- Hardox Armoured Bunker
- Metal Separator Magnet
- Automatic Lubrication System
- Dust-Reduction System
- Main Conveyor Cover
- Variable Concave Selection
- Double Deck Post Screen

VSITRACK SERIES



Unlike other crushers using metal components, Vertical Shaft Impact Crushers from VSITRACK series use the fed rocks to break themselves, thus minimizing operating costs considerably compared to other crushers. The output result of these machines is of high quality with an improved cubic shape, thus making the product adequate and more demanded by the construction industry.

The shaft is placed inside a chamber that contains a special crushing chamber having a rock-lined ring. The material is fed into the top of the chamber with the primary amount of the feed entering the top of the rotor. The rotor throws the material centrifugally out towards the crushing chambers at extremely high speed. A secondary amount of material feed falls into the accelerated primary feed at the crushing chamber. Thus all the material is reduced in a highly turbulent material cloud contained within the crushing chamber. Reduction occurs by impact, attrition, and abrasion.

Ideal for

- Sand Making
- Tertiary and quinary crushing in multi-stage crushing and screening applications
- Users in urban areas
- Superior cubic form output

Possible Internal Configuration Options



Rockshell

3/5 Port Rotor

Anvil Ring

Open Shoe Table

BPV 800



Rotor Type	Closed
Max Feed Size	38 mm
Weight	38,000 kg
Transport Dimensions (mm)	16,200 x 3,200 x 3,600
Operation Dimensions (mm)	15,150 x 3,200 x 4,300

Standard Features

- Highly efficient Closed Rotor VSI Crusher
- Hydraulically Adjustable Bunker Feeder
- Wireless Remote Control
- PLC Control System
- Operates on Electricity or Diesel
- Electric Drum Motors for Conveyors
- Belt Feeder

Optional Features

- Hardox Armoured Bunker
- Automatic Lubrication System
- Dust-Reduction System
- Main Conveyor Cover
- Crushing Chamber Configurations

BPV 950



Rotor Type	Open
Max Feed Size	70 mm
Weight	47,000 kg
Transport Dimensions (mm)	16,450 x 3,350 x 3,650
Operation Dimensions (mm)	15,900 x 4,450 x 4,500

Standard Features

- Highly efficient Opened Rotor VSI Crusher
- Hydraulically Adjustable Bunker Feeder
- Wireless Remote Control
- PLC Control System
- Operates on Electricity or Diesel
- Electric Drum Motors for Conveyors
- Belt Feeder

Optional Features

- Hardox Armoured Bunker
- Automatic Lubrication System
- Dust-Reduction System
- Main Conveyor Cover
- Crushing Chamber Configurations

VSITRACK SERIES + Post Screen



Mobile Vertical Shaft Impact crushers of the VSITRACK series BPV800 CS and BPV950 CS are exceptional mobile crushers able to use the fed rocks to break themselves, thus minimizing operating costs considerably compared to other crushers.

Though the output result of these machines is of high quality with an improved cubic shape, by adding a single-deck post screen the end product reaches the maximum preciseness. The material in a closed circuit system is continuously returned to the crusher until it's of a size that will pass through the product screen. This provides a clean and highly accurate end product.

Ideal for

- Sand Making
- Tertiary and quinary crushing in multi-stage crushing and screening applications
- Users in urban areas
- Superior cubic form output
- Users interested in a single and precise end product

Post Screen



Closed Rotor Impact Crusher



Open Rotor Impact Crusher

BPV 800 CS



Rotor Type	Closed
Max Feed Size	38 mm
Weight	43,000 kg
Transport Dimensions (mm)	18,250 x 3,400 x 3,650
Operation Dimensions (mm)	19,000 x 3,850 x 4,350

Standard Features

- Single Deck Screen
- Highly efficient Closed Rotor VSI Crusher
- Hydraulically Adjustable Bunker Feeder
- Wireless Remote Control
- PLC Control System
- Operates on Electricity or Diesel
- Electric Drum Motors for Conveyors
- Belt Feeder

Optional Features

- Hardox Armoured Bunker
- Automatic Lubrication System
- Dust-Reduction System
- Main Conveyor Cover
- Variable Internal Configurations

BPV 950 CS



Rotor Type	Open
Max Feed Size	70 mm
Weight	55,000 kg
Transport Dimensions (mm)	19,000 x 3,650 x 3,700
Operation Dimensions (mm)	19,000 x 4,750 x 4,700

Standard Features

- Single Deck Screen
- Highly efficient Opened Rotor VSI Crusher
- Hydraulically Adjustable Bunker Feeder
- Wireless Remote Control
- PLC Control System
- Operates on Electricity or Diesel
- Electric Drum Motors for Conveyors
- Belt Feeder

Optional Features

- Hardox Armoured Bunker
- Automatic Lubrication System
- Dust-Reduction System
- Main Conveyor Cover
- Variable Internal Configurations

MOBILE SCREENS



Mobile screens are designed to optimally screen materials at the lowest operation cost while still benefiting from mobility and compactness. These mobile screens are typically used in aggregate production, quarries, mining, and recycling and are perfect for users looking for mobility and compactness.

Boratas Machinery's mobile screens are characterized by their high mobility, superior quality, and extreme compactness. Their high mobility provides easy movement between sites. Moreover, they do not require any heavy investment in concrete works and personnel.

With mobile screening units, you can maximize productivity and reduce operating costs while increasing safety and reducing environmental impact, which is very important nowadays. All of our screening units are eco-conscious since they can operate on both diesel and electricity.

There are also other benefits in addition to the mobility advantages. For example, Boratas Mobile Screens are using Diesel-Electric Hybrid Technology which provides significant efficiency in energy consumption, and as a result, they are more environmental-friendly.

There are lots of advantages to using a Diesel-Electric drive over hydraulic drives. Firstly, the fuel consumption is significantly less, which is really an effective impact on the overall costs (20-40% less than hydraulic driven models). Secondly, Diesel-Electric machines require significantly less hydraulic oil, which reduces the cost of oil changes.

Another positive impact is the operating temperature limit for machines. The Diesel-Electric drive system provides the operator the opportunity to continue operation in freezing cold conditions, which is a great opportunity for cold regions.

We believe that hybrid cost significantly less for our customers in the long-term, and they will be satisfied by the overall performance and efficiency of these machines. Also, we do care about ecological concerns and we try our best to protect our planet along with satisfying our customers, Diesel-Electric drive is the best solution for this.

GLASSTRACK - MOBILE VIBRATING SCREENS

BPE 102 | BPE 103 26-27

SCALTRACK - MOBILE SCALPING SCREENS

BPS 100 | BPS 101 28-29

Mobile Screening machines are track-mounted units that are able to be moved by the operator easily with wireless remote control. Because of using crawler tracks, it can move on any kind of surface without any problem. These mobile Screens are used in different operations such as aggregates, recycling, and mining.

CLASSTRACK SERIES



Mobile screens of the Classtrack series are the perfect way to screen and split materials at the lowest operation cost while still benefiting from high mobility and extreme compactness. These mobile screens are typically used in aggregate production, mining, and recycling.



Features dual-deck triple-deck or screenbox with desired mesh sizes according to the application. The screen body is made from a single sheet plate. There are eccentric weights that can be adjusted for vibration control to prevent extra oscillation, which can occur during start and stop.

Ideal for

- Multistage crushing and screening applications
- Separation of sand and gravel
- Recycling
- Secondary or tertiary crushing
- Users interested in compactness and mobility
- Work in urban regions

Adjustability

These Screens are supplied as standard or tailored versions to meet all the process requirements. These mobile screens come with different types of mesh, such as standard steel screen mesh, perforated sheet, or polyurethane. Washing option can also be added if required.

Cost Effectiveness

The quick set-up time, low downtime, low fuel consumption, and low overall cost make the Classtrack series very cost-effective mobile units. Accordingly, Its high productivity and high uninterrupted uptime increase profits exponentially.

BPE 102



Screen Decks	2
Screen Size	5,000 x 1,500 mm
Weight	27,000 kg
Transport Dimensions (mm)	17,000 x 3,350 ,x 3,400
Operation Dimensions (mm)	18,500 x 16,350 x 5,600

Standard Features

- Dual-Deck Screen
- Hydraulically Foldable Belts
- Components with Direct Drive
- Wireless Remote Control
- PLC Control System
- Operates on Electricity or Diesel
- Electric Drum Motors for Conveyors
- Grizzly Hopper, Hydraulic Dumping

Optional Features

- Washing System
- Automatic Lubrication System
- Dust-Reduction System
- Flex Screen Mesh

BPE 103



Screen Decks	3
Screen Size	5,000 x 1,500 mm
Weight	33,000 kg
Transport Dimensions (mm)	17,600 x 3,450 x 3,600
Operation Dimensions (mm)	19,400 x 14,200 x 6,250

Standard Features

- Triple-Deck Screen
- Hydraulically Foldable Belts
- Components with Direct Drive
- Wireless Remote Control
- PLC Control System
- Operates on Electricity or Diesel
- Electric Drum Motors for Conveyors
- Grizzly Hopper, Hydraulic Dumping

Optional Features

- Washing System
- Automatic Lubrication System
- Dust-Reduction System
- Flex Screen Mesh

SCALTRACK SERIES



Mobile Scalping Screens of Scaltrack series are a combination of extremely accurate classification of the end product and high output. Its cost-effectiveness is justified by its low fuel consumption, low operating costs, and maintenance as well as high capacity.

Typically used to classify and separate the products between the primary and secondary crusher, Scaltrack mobile scalping screens are ideal for primary scalping and natural sand applications.



Screening is done either by grizzlies, Grizzly finger bars, or hexagonal holes. Steel screen mesh can be added as an option.

Ideal for

- Mining and Recycling
- Multistage crushing and screening applications
- Users interested in compactness and mobility

Flexibility

Being used in multiple applications such as recycling or aggregate pre-screening, Scaltrack mobile scalping screen has a variety of options that can be added giving it extreme flexibility and adjustability.

Adjustability

The feeding is done either by a feeding belt or an apron feeder, providing reliability and high capacity. The metallic nature of the apron feeder prevents material from sticking.

Quick Set-up Time

Set-up time has never been easier and quicker. Switching from transport to operating position only need unfolding the foldable conveyors, setting the right screen angle, and finally raising the feeder to the right position.

BPS 100



Top Deck Size	3,600 x 1,300 mm
Bottom Deck Size	3,380 x 1,300 mm
Weight	24,000 kg
Transport Dimensions (mm)	13,600 x 2,900 x 3,300
Operation Dimensions (mm)	14,000 x 13,600 x 4,400

Standard Features

- Dual-Deck Screen
- Hydraulically Foldable Belts
- Wireless Remote Control
- PLC Control System
- Operates on Electricity or Diesel
- Electric Drum Motors for Conveyors
- Replaceable Screen Mesh

Optional Features

- Apron Feeder
- Grizzly Deck
- Grizzly Flex Mesh
- Hardox Punch Plate
- Dust-reduction System

BPS 101



Top Deck Size	4,700 - 1,500 mm
Bottom Deck Size	4,400 x 1,500 mm
Weight	34,000 kg
Transport Dimensions (mm)	15,900 x 3,150 x 3,300
Operation Dimensions (mm)	16,250 x 14,150 x 4,350

Standard Features

- Dual-Deck Screen
- Hydraulically Foldable Belts
- Wireless Remote Control
- PLC Control System
- Operates on Electricity or Diesel
- Electric Drum Motors for Conveyors
- Replaceable Screen Mesh

Optional Features

- Apron Feeder
- Grizzly Deck
- Grizzly Flex Mesh
- Hardox Punch Plate
- Dust-reduction System







www.boratas.com.tr

boratas

boratas

BPC 100
MOBILE IMPACT CRUSHER

boratas

ROCKTRACK 100

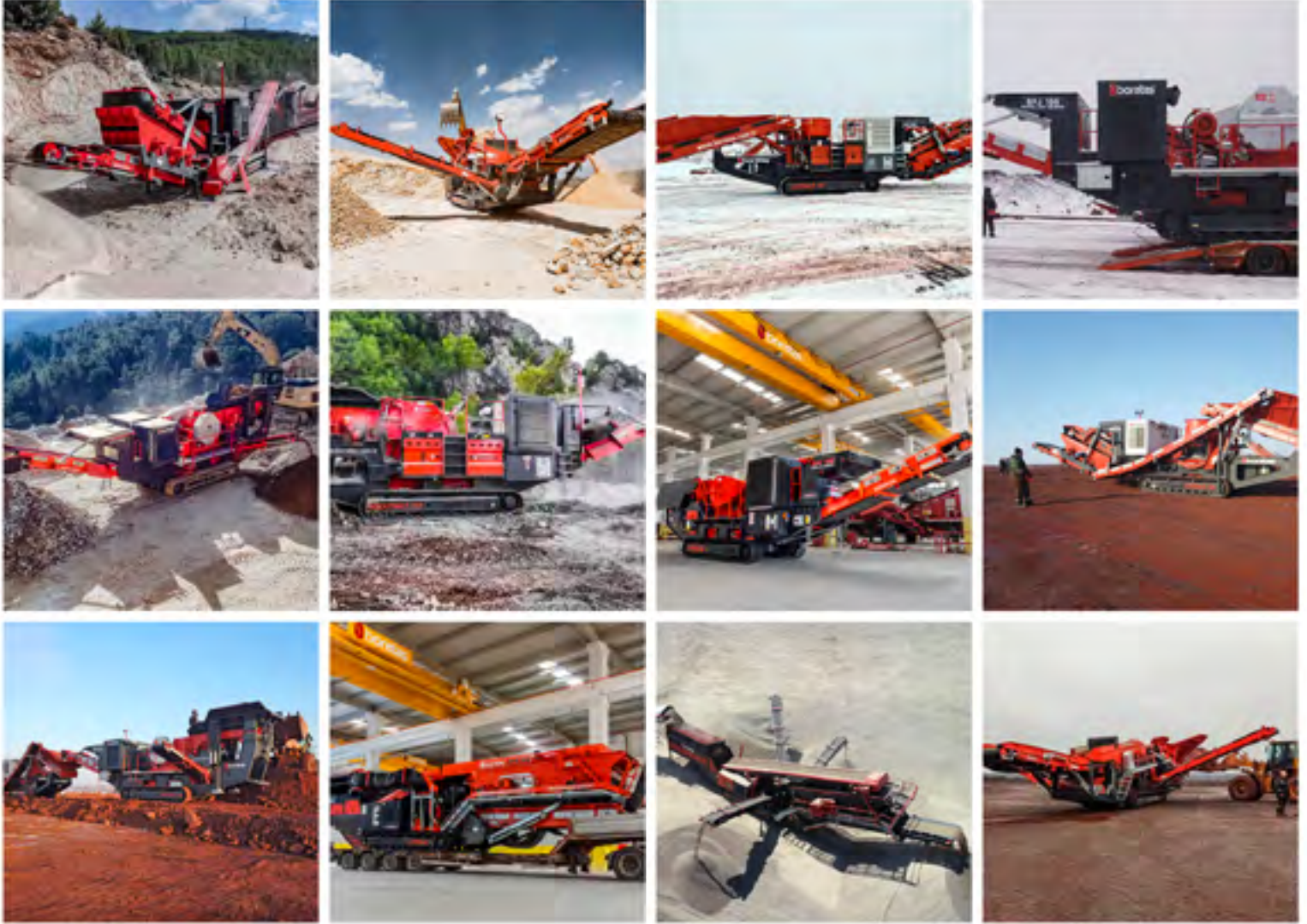








 **boratas**[®]
CRUSHING & SCREENING MACHINES



www.boratas.com.tr
www.mobilecrushersturkey.com



info@boratas.com.tr



+90 507 514 42 28



+90 232 853 85 95



Anadolu Caddesi NO:8, Bağyurdu Organize, Sanayi Bölgesi, 35743, Kemalpaşa.İzmir



BORATAS MACHINERY



/boratasmachinery



/boratasmobilecrusher



/c/BorataşMakine